

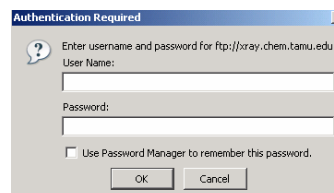
How-to-transfer your data from the server to your computer

Method # 1

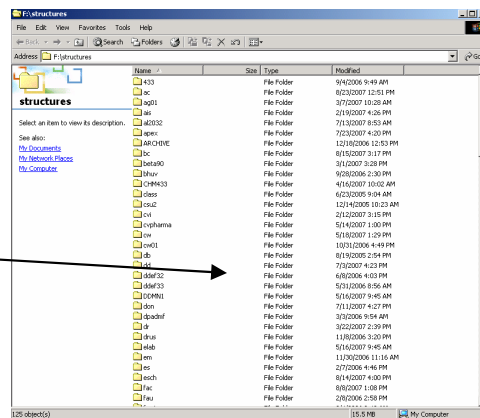
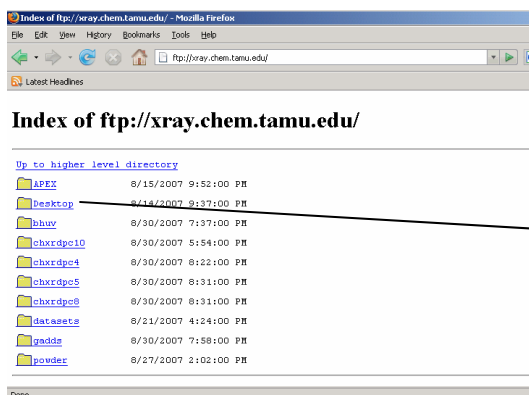
1. Start internet explorer and type <ftp://xray.chem.tamu.edu> in the address bar



2. You will be asked for an User Name and Password. Input the correct information and continue. (the information can be obtained from the lab managers)



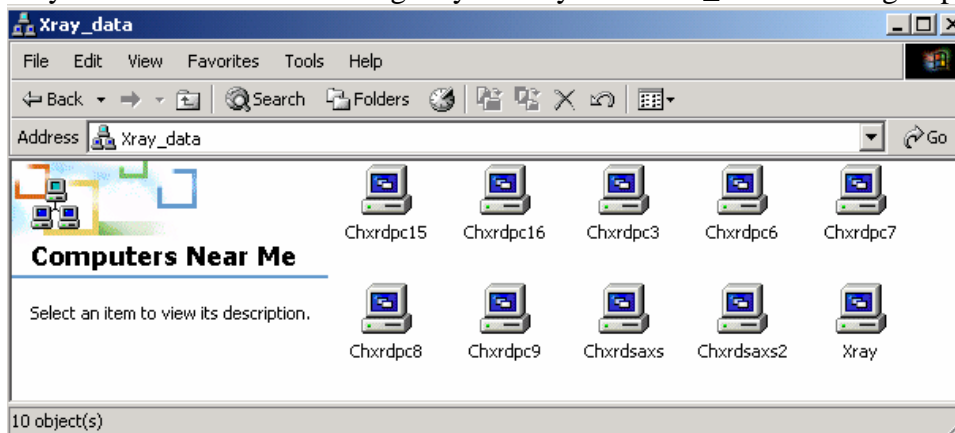
3. You should now see the computer folders
4. Navigate to Data folder and then to the computer station folder (SMART1 = chxrdpc4 and SMART2 = chxrdpc5 etc)



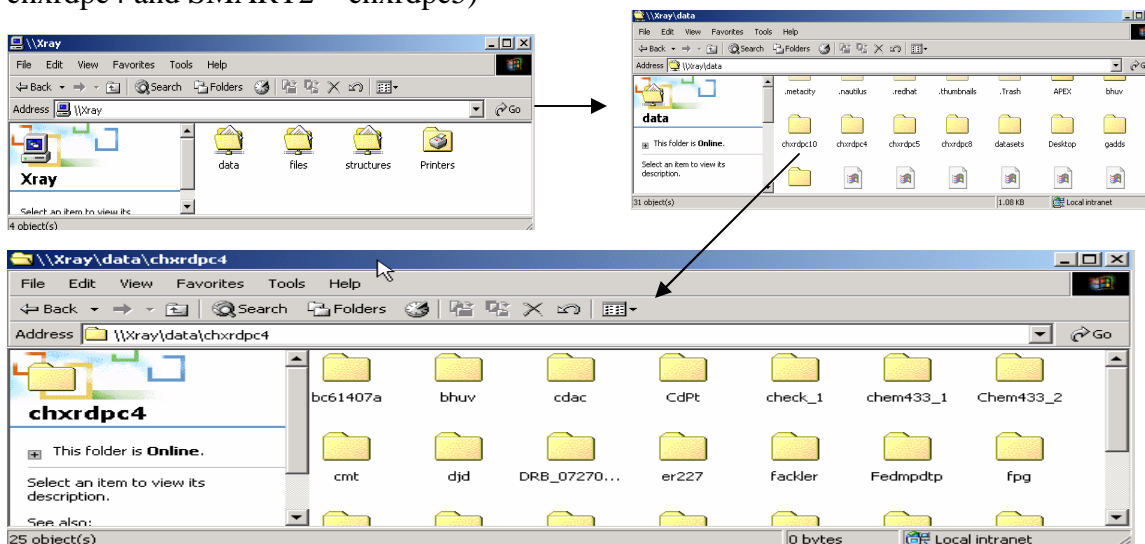
5. Navigate to your folder and drag and drop it to your computer.

Method 2. (Windows)

1. Point to My Network Places and navigate your way to XRAY_DATA workgroup



2. Point to Xray
3. When prompted enter the User Name and Password (see above)
4. Navigate to Data folder and then to the computer station folder (SMART1 = chxrdpc4 and SMART2 = chxrdpc5)



5. Drag and drop it to your computer.