

How-to- Integrate Data with the APEXII software on the Linux Server

This procedure will work for both APEXII and SMART1000 frames.

The data should be on the Linux Server (xray.chem.tamu.edu).

Be sure to move or collect your data to a subdirectory on the Server.

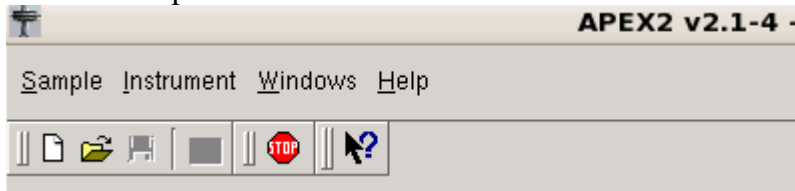
Log on to the server : xray.chem.tamu.edu

Account : (see manager)

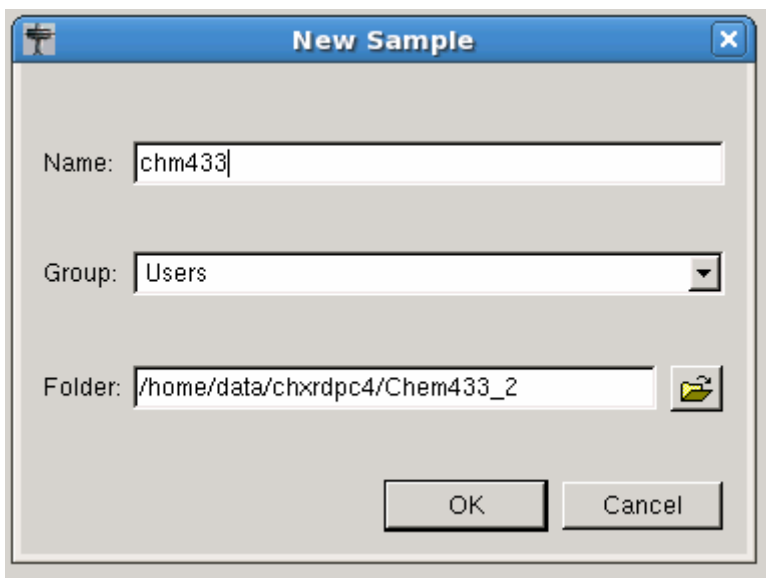
Password : (see manager)

Point to the APEX icon and start program

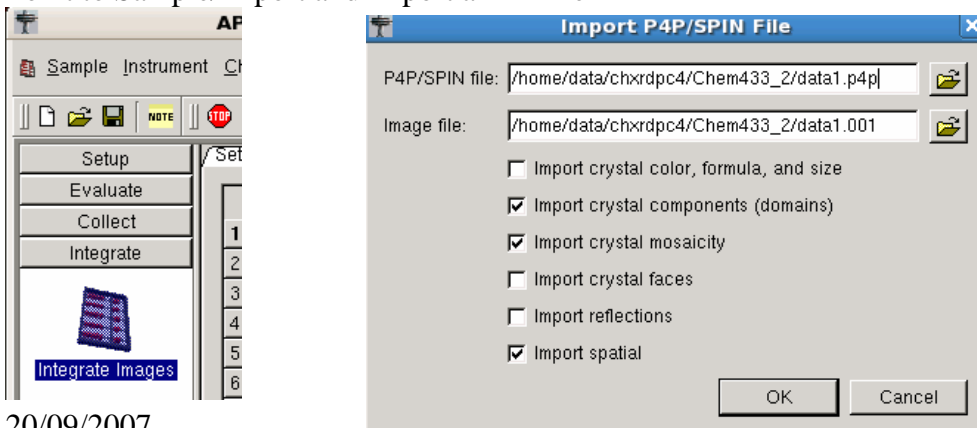
Point to Sample/New



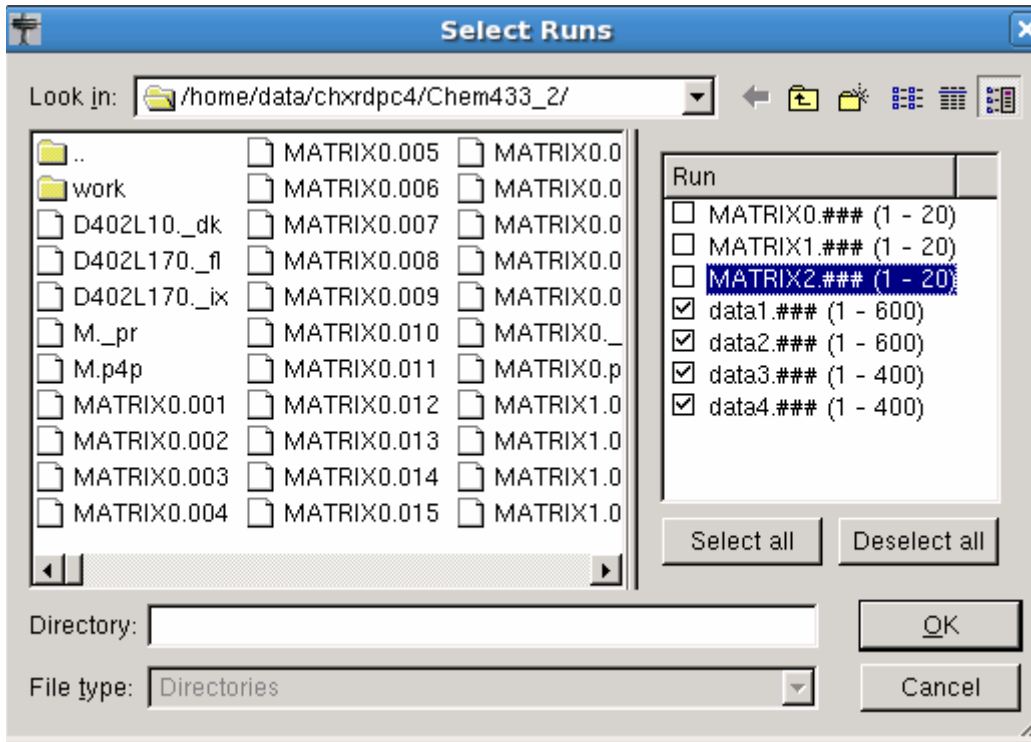
Input the name and click the folder button. Find your data.



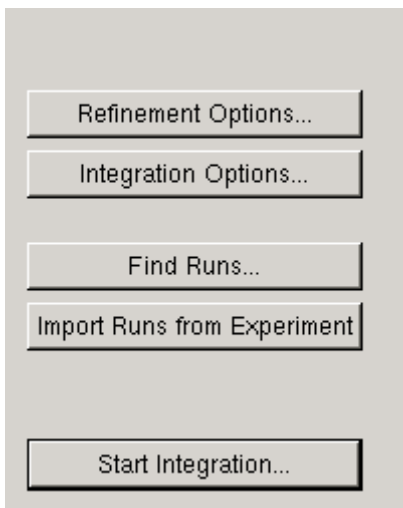
Point to Sample/Import and import a P4P file



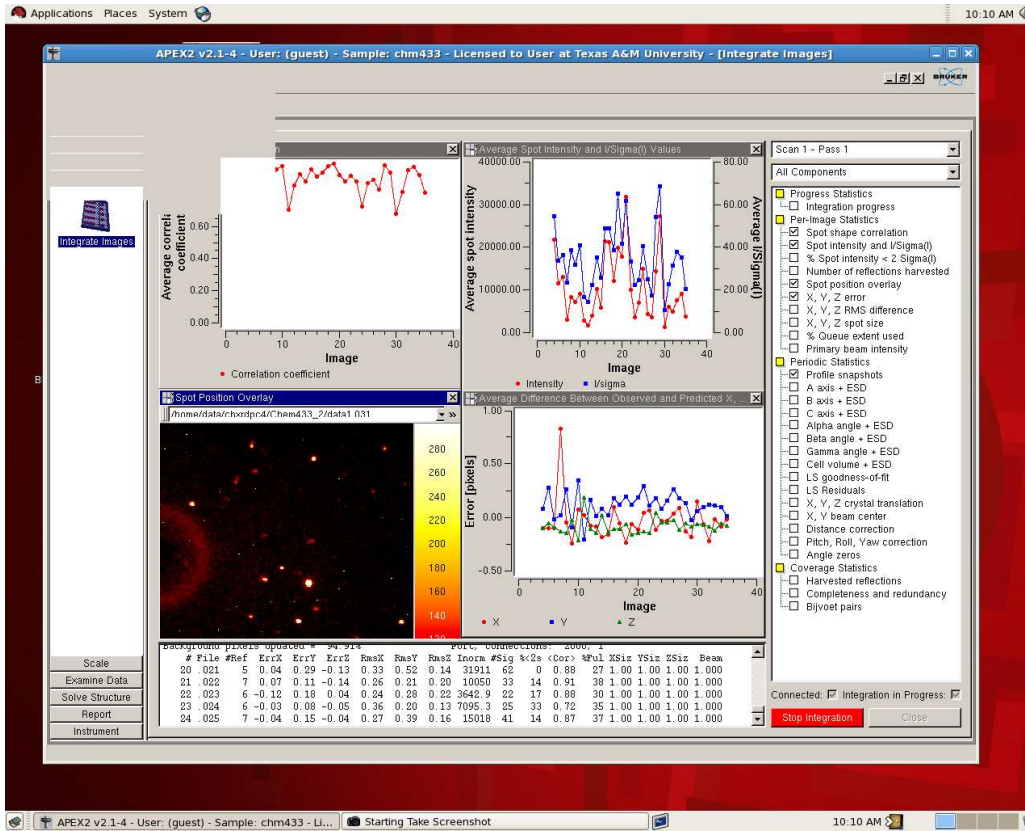
Point to Integrate Images and Select Runs



Check the files that you want in the Run box



Start the Integration.



The output files will be in the work subdirectory.