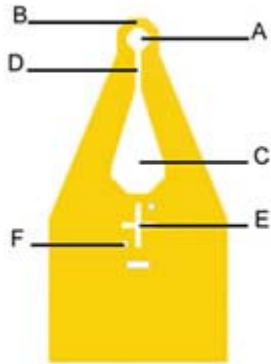


New Loops! MiTeGen*

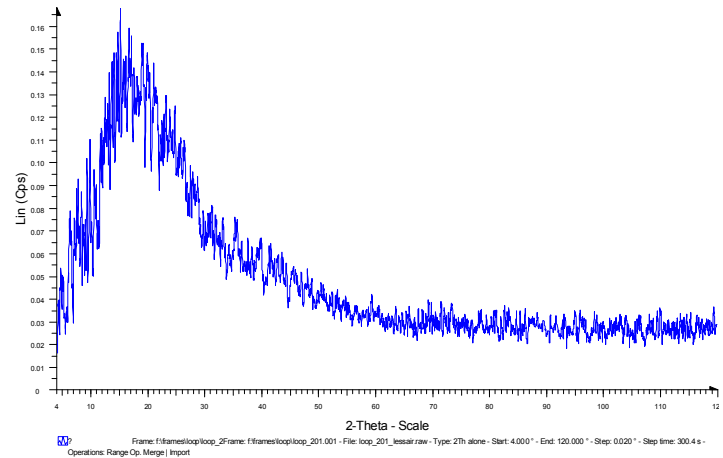
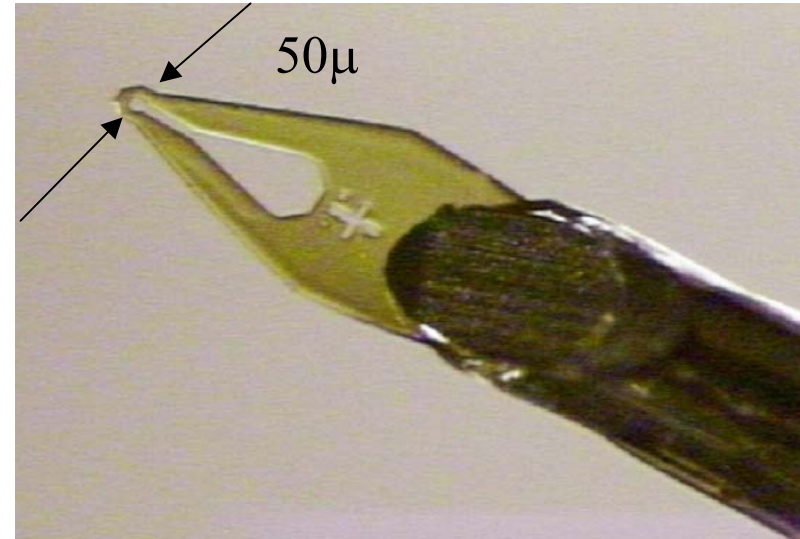
MicroMounts™ consist of a thin microfabricated polyimide film attached to a solid non-magnetic stainless steel pin. The film is polyimide, which is used in Kapton® tape and is employed for X-ray transparent windows on X-ray beam lines. The film is curved by wrapping polyimide film around the steel pin. This provides excellent stiffness even with very thin (5 micrometer) films, and is convenient for retrieving and handling crystals



Crystal aperture (A) sizes from 10 to 600 micrometers, with minimal polyimide width (B) around the aperture to minimize background scatter in all orientations.

Loops are curved (like a calligraphers pen) to limit vibrations due to nitrogen flow from the LT attachment

* www.mitegen.com



Background Scatter (in Counts/sec)